

# **Herricks Union Free School District**

## **2016 Capital Improvements Bond Update**

**August 31, 2017**



# Timeline to Date

December 6, 2016	Successful Bond Referendum Vote
December, 2016	BBS conducts field survey of existing interior doors and hardware with District Facilities
January, 2017	Director, and prepares construction documents for Phase I Capital Improvements. Synthetic turf field drawings are prepared and added to Phase I Capital Improvements package
February 21, 2017	Executed paperwork mailed to SED; Phase I logged in February 23, 2017
March 23, 2017	BBS Update to Board of Education
May 25, 2017	BBS Update to Board of Education BBS received a “Level 1” review for Phase I on April 4, 2017. Reviewed on May 8, 2017 Pre-Bid Addendum to SED sent; SED requires update on NYSOPHP for Shelter Rock Academy, which is on Historic Register. SHPO approval obtained on July 18, 2017; information forwarded to SED on July 18, 2017; currently awaiting final SED approval for late Summer, 2017 bidding as planned. SED <b>Approval obtained; projects went to bid</b>
June 9, 2017	Phase II SED project submission made June 12. “In the queue” for review.
July 20, 2017	BBS Update to Board of Education – Cafeteria Interiors
<b>August 4, 2017</b>	<b>Phase I Capital Improvements released to bid; Bids taken on 8/23/17.</b>

## **Phase II projects included in June, 2017 submission**

- High School Cafeteria & Kitchen Renovations
- **New 1,600-seat Bleachers and New Press Box at High School**
- New Comfort Station Building at High School
- New Sports Storage Building at High School
- New Running Track Lighting at High School

## **Phase II projects included in Fall, 2017 submission**

- Existing Concession Stand Rehabilitation at High School
- Selective Electrical Upgrades (service replacement) at High School
- Localized Ventilation Improvements – all schools
- Localized site drainage, asphalt & sidewalk improvements - all schools

# Bleacher Fit-Out Options

8/23/17 - A meeting was held at District to discuss the different fit-out options available for the new 1,600-seat bleachers/grandstand scheduled for Phase II construction, Summer 2018. Attendees included District representatives (High School Principal and Vice Principal, Athletic Director, Facilities Director & staff, Assistant Superintendent for Business, District Superintendent & Board President, as well as BBS Architects, Landscape Architects & Engineers, PC, and Park East Construction.)

Discussion centered around possible 'fit-out' options for the proposed bleachers, and some initial discussion revolving around the proposed grandstand drop-off area, which will be located off the main entry/exit drive leading up to the High School building. These items will undergo continued review and final selections from District representative, including the Board members.

Any selected 'fit-out' options will be included into the final bid set of Phase II documents as Add Alternates to contract, so that if the base bid for the bleachers comes in less than budgeted, the additional items can be considered and awarded.

# Bleachers - Standard Fit-Out



The bond budget for the 1,600-seat aluminum bleacher assembly includes base/standard fit outs similar to that shown below; standard aluminum bench seating with colored front skirt.

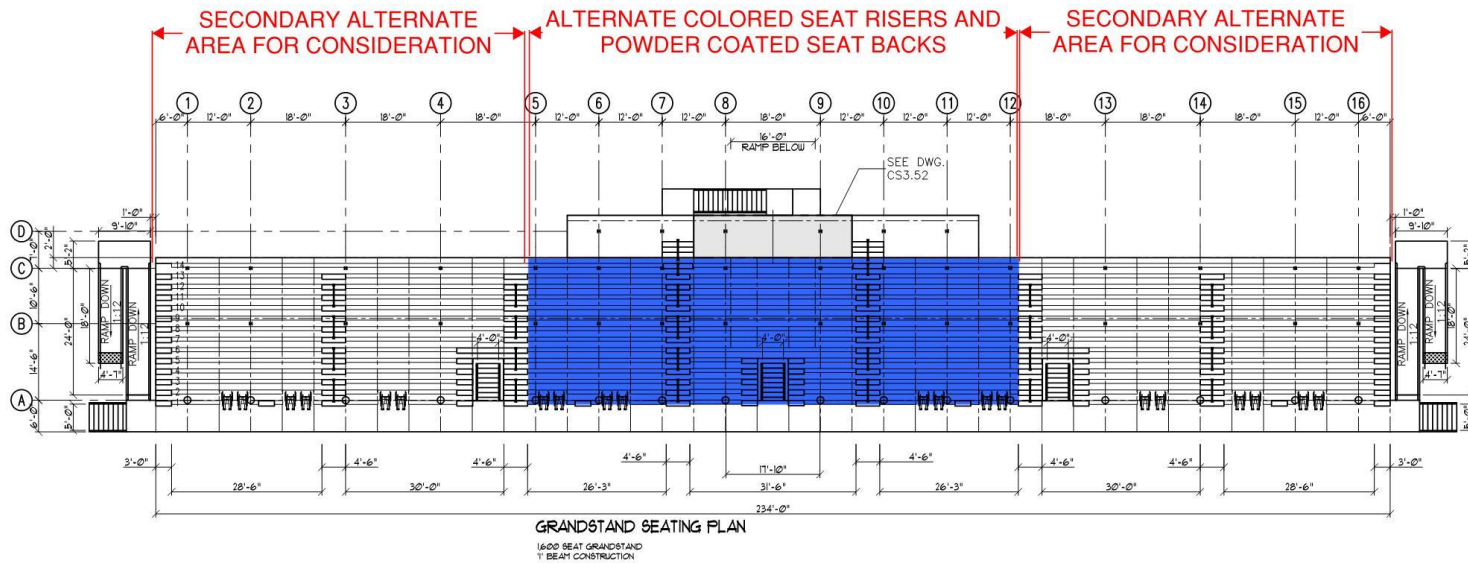


# Bleachers - Standard Fit-Out



Another example of standard aluminum bench seating with colored front skirt.

# Grandstand – Seat Riser / Seat Back Options



A common Add Alternate to Base Bid could be adding colored seat risers and powder-coated seat backs, routinely set at the center section. Additional Add Alternates can also be taken for the seat backs at the remaining sections.



# Grandstand – Seat Riser / Seat Back Options





# Grandstand – Seat Riser / Seat Back Options





# Grandstand – Standard Rear View



The standard rear view of Grandstand bleachers assembly. Exposed structure with chain link fence surrounds with privacy slats, flanking the vomitory entrances up into the stadium area. This is provided within the current bond costs.

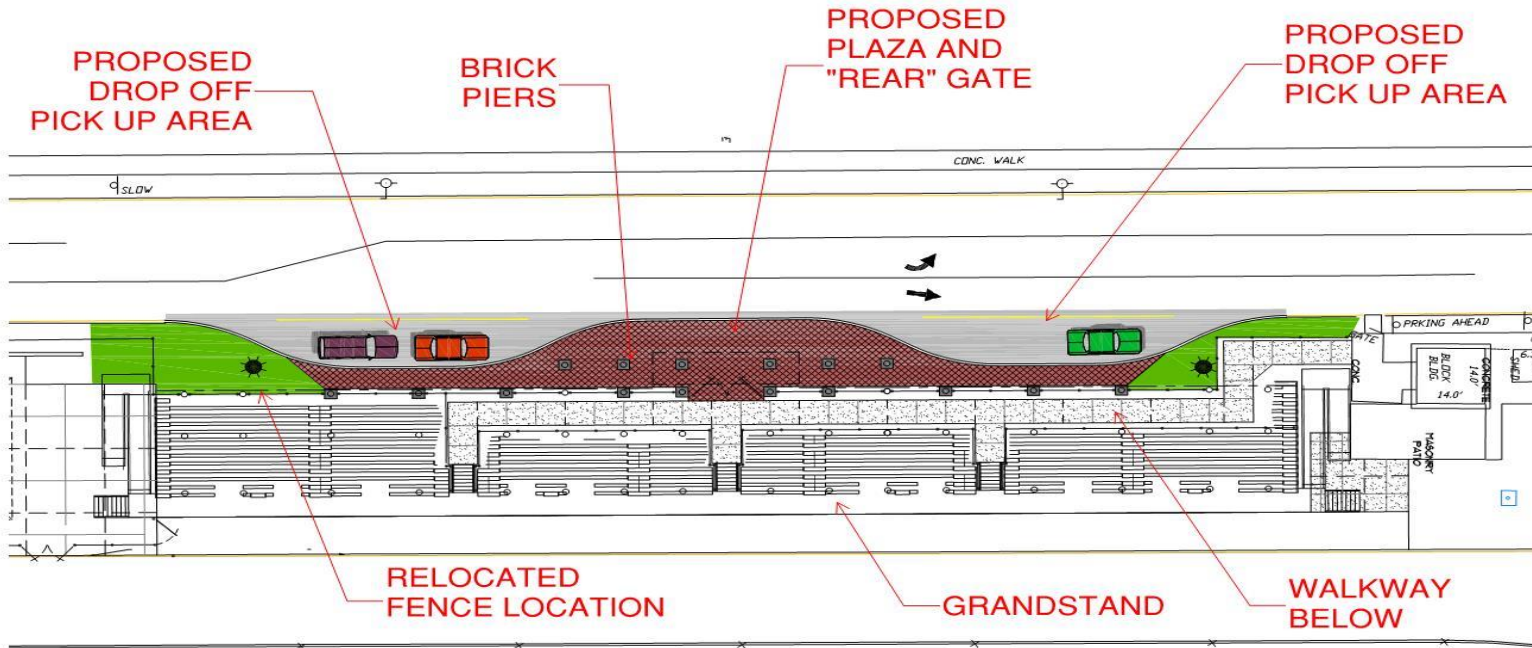


# Grandstand – Upgraded Rear View



An upgrading of the standard exposed column treatment, rear view of Grandstand bleachers assembly. While an additional cost, the inclusion of brick pier surrounds and precast stone caps provide an upgraded style to the columns. Additional treatment can also include wrought iron fencing in lieu of black vinyl chain link fencing.

## Grandstand – Drop-Off Plaza



**At 8/23/17 Owner's Meeting, discussion began on potential Grandstand drop-off plaza improvements – these site improvements would retain traffic flow on the existing entry drives to the High School entrance.**



# Bleacher Fit-Out Options – Proposed Costs

<u>Item</u>	<u>Estimated Add Alternate Cost</u>
Bleacher Seat Backs (center 3 sections)	\$ 18,000
Bleacher Seat Backs (L & R 4 sections)	\$ 25,000
Bleacher Colored Risers (center 3 sections)	\$ 10,000
Bleacher Colored Risers (L & R 4 sections)	\$ 15,000
Brick Pier Surrounds & Stone Caps – 8' height	\$ 64,000
Ornamental Wrought Iron Fencing	\$ 30,000
Drop-Off Plaza Development	\$ 150,000

# **Herricks Union Free School District**

**Thank you**

